

压力开关 Pressure Switch TSNS-N Series

Specification (规格)



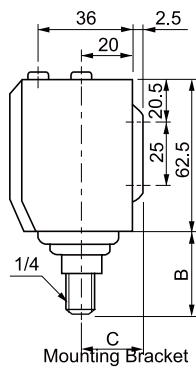
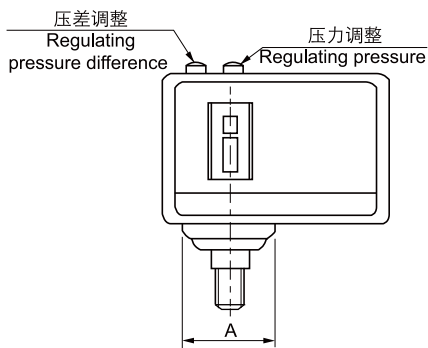
Model (型号)	Port size (接管口径)	*1) Fluid Temperature (流体温度)	Setting Pressure Range (Mpa) (设定压力范围)		Regulating Range Of Pressure Difference (Mpa) (压差调整范围)		Factory Settings (Mpa) (初始设定值)		Proof Pressure (Mpa) (耐压力)	Mounting (安装)
			Min. (最低)	Max. (最高)	Min. (最低)	Max. (最高)	OFF (ON)	ON (OFF)		
TSNS-C103N	Rc(PT)1/4	-10~120°C	-0.07	0.3	0.04	0.2	0.15	0.3	1.7	Mounting Bracket Supplied (提供安装板)
TSNS-C106N			-0.07	0.6	0.06	0.4	0.3	0.2	1.7	
TSNS-C110N			0.1	1.0	0.1	0.3	0.6	0.5	1.7	
TSNS-C120N			0.5	2.0	0.2	0.4	1.2	1.05	3.3	
TSNS-C130N			0.5	3.0	0.5	1.0	2.0	1.5	3.3	

1) Can be used in pneumatic or hydraulic refrigerating installations. 可使用在气压或液压冷冻冷却装置。

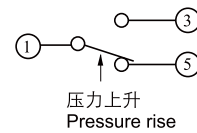
Electrical Specification (规格)

Rated Voltage(V)(额定电压)	COSØ	125/250 VAC
Rated Current(A)(额定电流)	1	12
Inductive Current(A)(感应电流)	0.75	12
	0.45	72

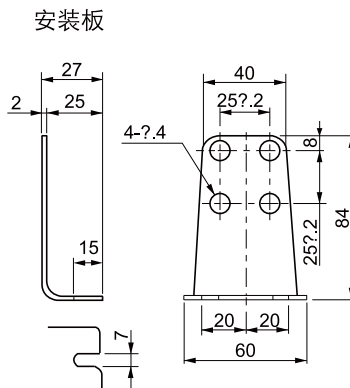
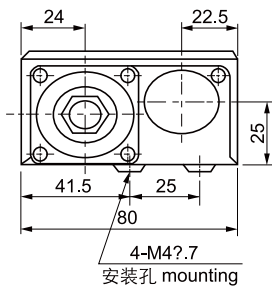
Dimensions(mm)(外形尺寸图(毫米))



Contact Form (触点形式)



1	Common terminal(共接端)
3	Close on pressure increase (压力上升接点)
5	Close on pressure decrease (压力下降接点)



Model(型号)	A	B	C
TSNS-C103N	38.5	38.9	22.4
TSNS-C106N	34.4	36	22.4
TSNS-C110N			
TSNS-C120N	22	32.7	18.5
TSNS-C130			