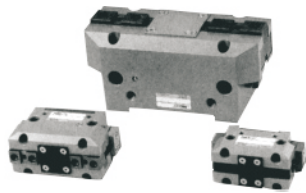


强力型平行气动开闭手指 General Hand

THN Series



Feature (特征)

- Parallel open & close motion type by wedge & plunger
- Compact size & light weight
- Suitable for heavy work pieces due to strong gripping force
- Possible to mount auto switches (Proximity switch)
- 平行开闭型气爪
- 结构紧凑, 轻量化
- 把持力强, 适用于重物移送
- 可配磁性开关

How To Order (型号表示方法)

THN 20 - RS2

Bore
缸径

20, 25, 30, 40, 50, 60, 80, 100

Auto Switch
磁性开关

Nil(空)	None (无磁性开关)
RS1	Switch 1EA(磁性开关1只)
RS2	Switch 2EA(磁性开关2只)

Specification (规格)

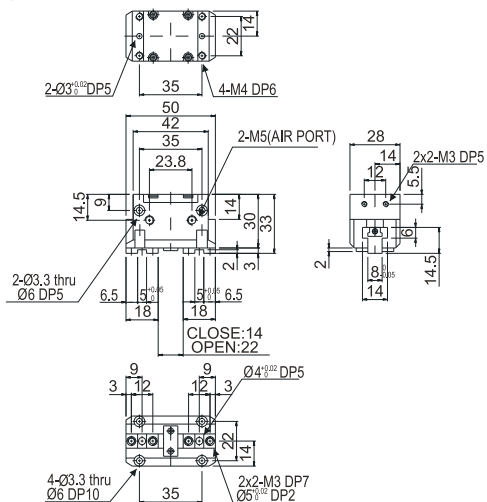
Type(型号)	THN20	THN25	THN30	THN40	THN50	THN60	THN80	THN100
Cylinder Bore Size(缸径)(mm)	20	25	30	40	50	60	80	100
Stroke(开闭行程)(mm)	8	12	16	20	26	32	50	60
Gripping Force(理论把持力)(kgf)	关	8.6	12.3	18.2	32.8	50.7	79.3	107
	开	9.5	15	20.5	38	60.4	89.3	114
Air pressure(使用压力)(5kgf/cm ²)								
Air Port Size(接管口径)	M5	M5	M5	PT1/8	PT1/8	PT1/8	PT1/8	PT1/8
Weight(本体重量)(kgf)	0.13	0.27	0.43	0.75	1.3	2.4	5.0	9.2
Allowable Length of Soft Jaw L(允许距离)(mm)	50	64	80	100	125	150	180	200
Working Fluid(使用流体)	Clean Air(洁净空气)(*注1)							
Operating Pressure(使用压力)(kgf/cm ²)	(3~7) General resistance pressure: 10.5 (3~7(普通耐压:10.5))							
Lubrication(润滑)	Not Required(不需要)(*注2)							
Temperature(使用温度)(°C)	5~60							
Accuracy(反复开闭位置精度)(mm)	±0.03		±0.08			±0.1		
Max. Cycle per Minute(最高使用回数)(C.P.M)	100		60			30		
Motion Type(工作方式)	Double-acting type (双动)(Structure: Parallel open&close General Hand by Crank Lever)(平行开闭)(Sliding Part: Metal Guide)							

Note 1) Clean Air is contained solidity of 99.9% fluid oil and 0.3% supersaturated wet through filtering 3~10µm
(洁净空气: 用3~10µm过滤器, 过滤掉99.9%水份和液体油含0.3%固体物的洁净空气.)

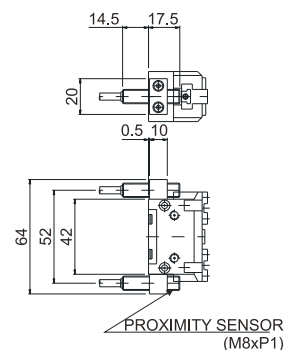
Note 2) Please Use Turbine Oil 1st-Grade ISOVG32, If Necessary. (如需要润滑, 请用透平1号油ISOVG32.)

Dimensions(mm)(外形尺寸图(毫米))

THN20



THN20-RS2

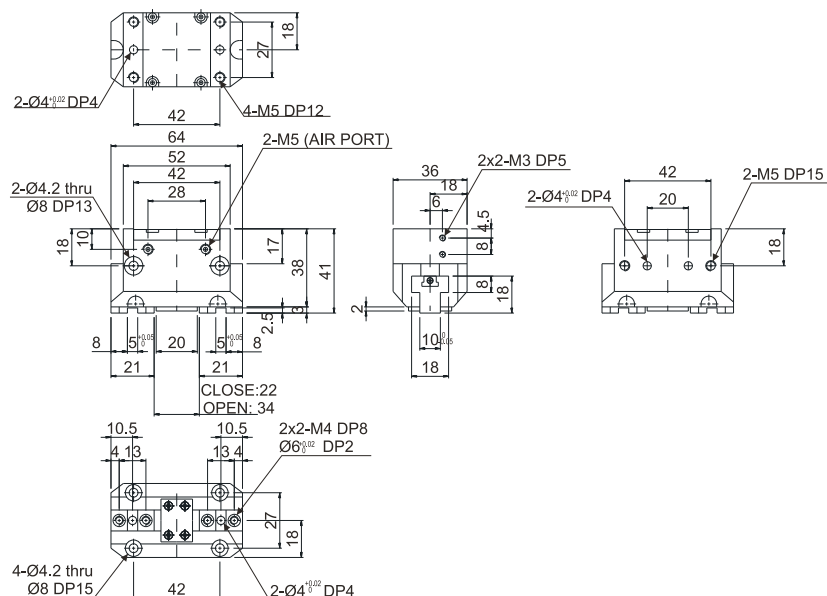


强力型平行气动开闭手指 General Hand

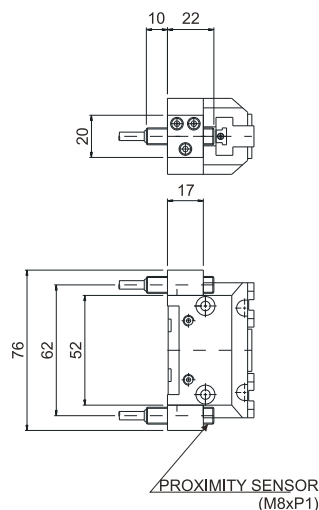
THN Series

Dimensions(mm)(外形尺寸图(毫米))

THN25

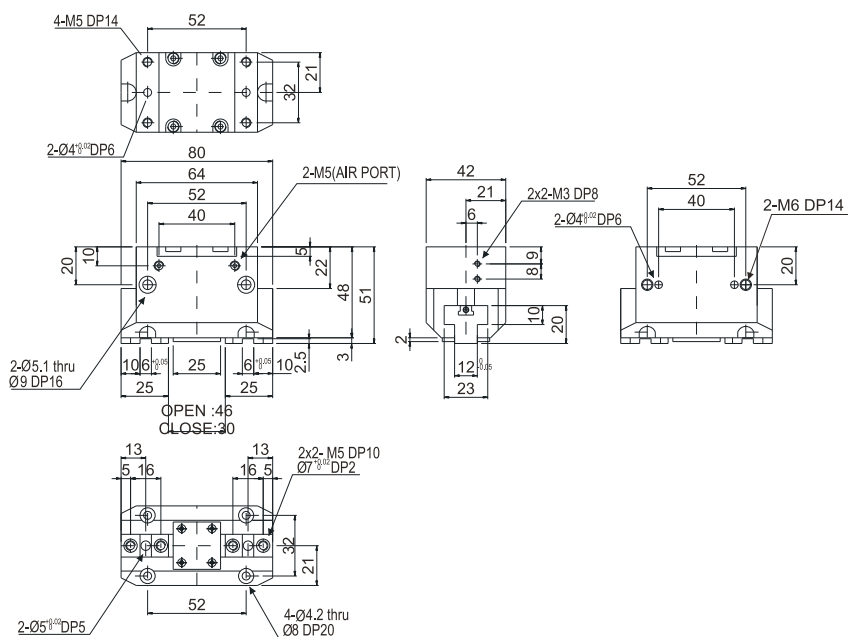


THN25-RS2

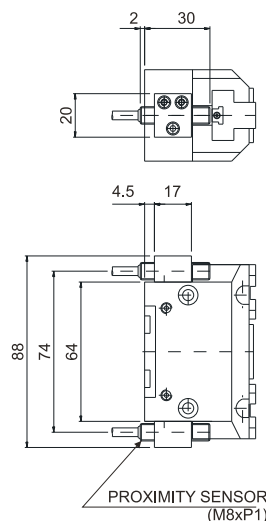


Dimensions(mm)(外形尺寸图(毫米))

THN30



THN30-RS2

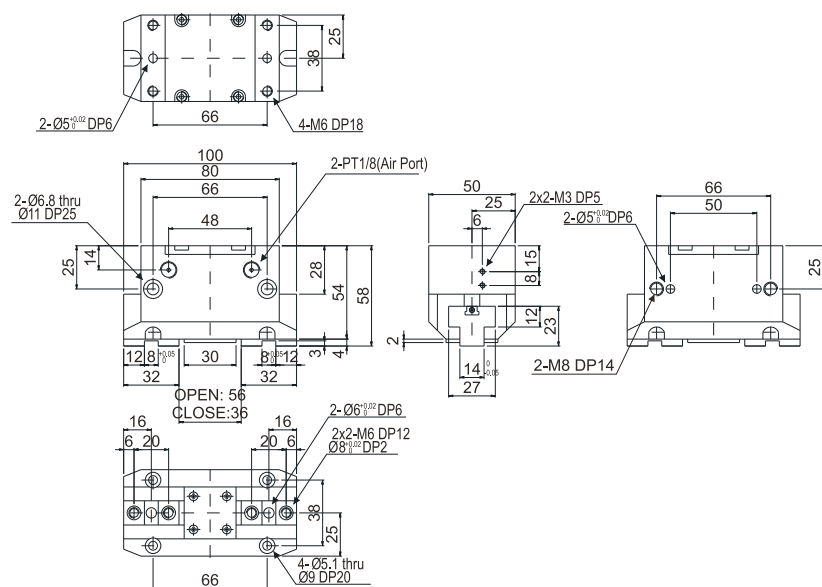


强力型平行气动开闭手指 General Hand

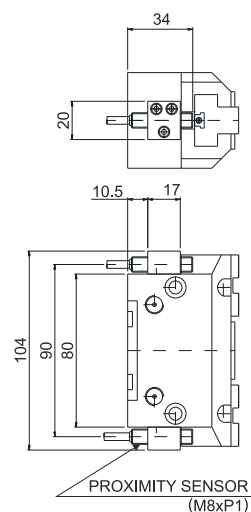
THN Series

Dimensions(mm)(外形尺寸图(毫米))

THN40

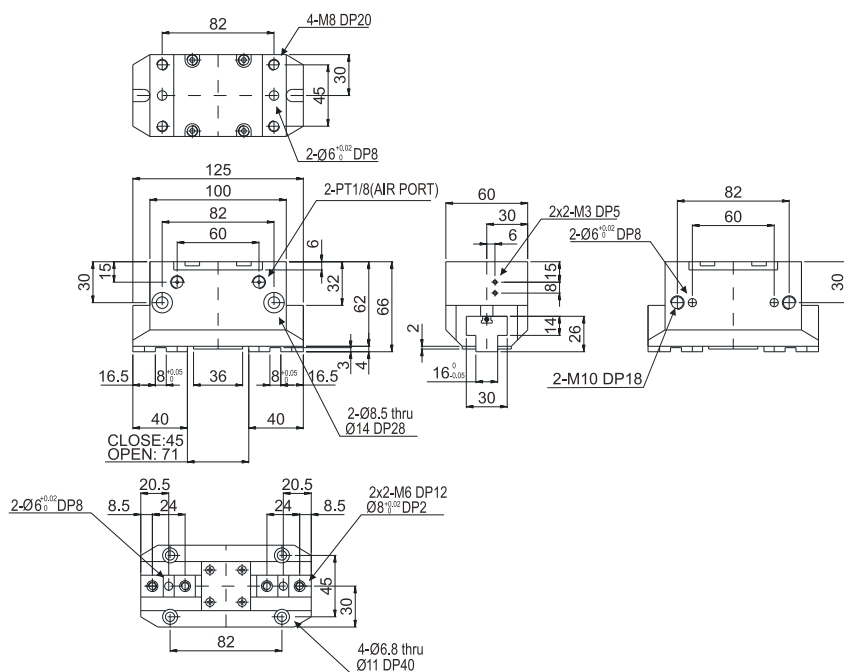


THN40-RS2

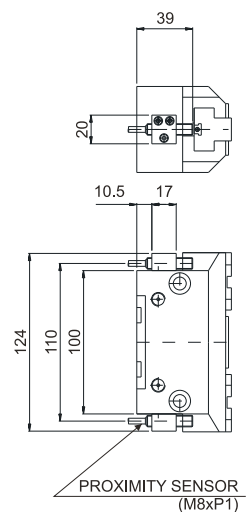


Dimensions(mm)(外形尺寸图(毫米))

THN50



THN50-RS2

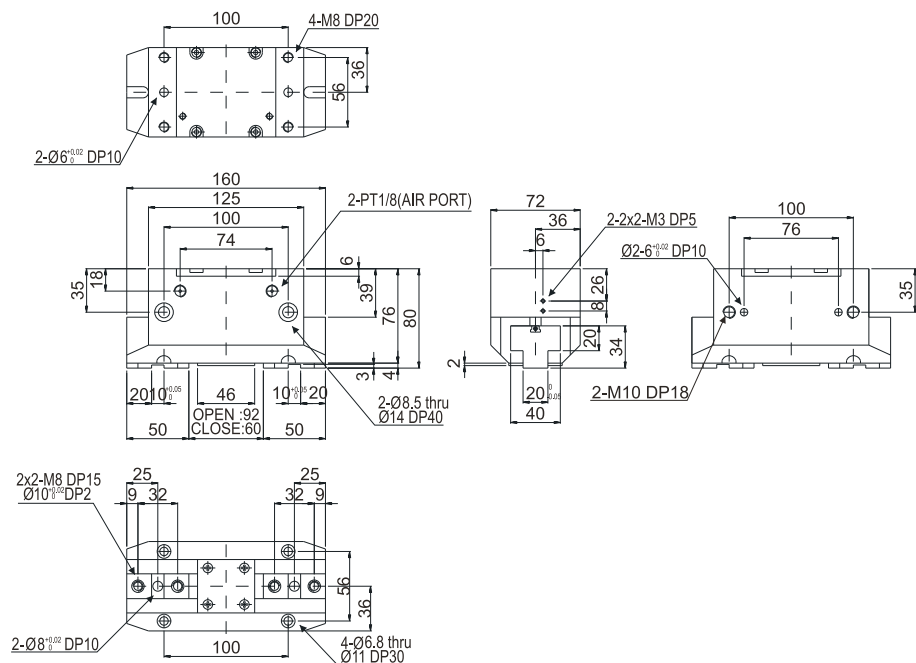


强力型平行气动开闭手指 General Hand

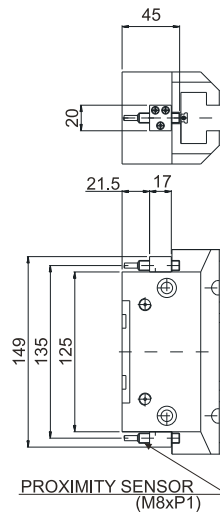
THN Series

Dimensions(mm)(外形尺寸图(毫米))

THN60

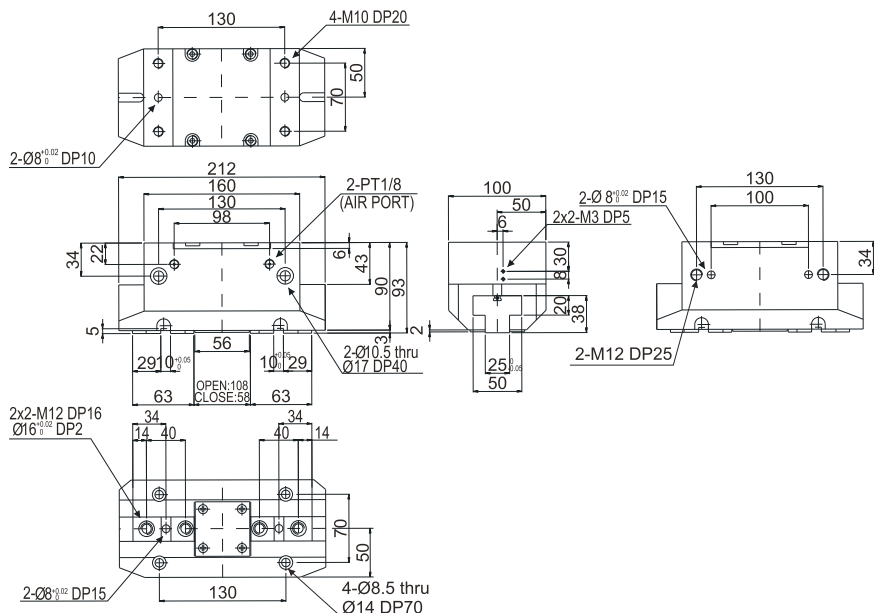


THN60-RS2

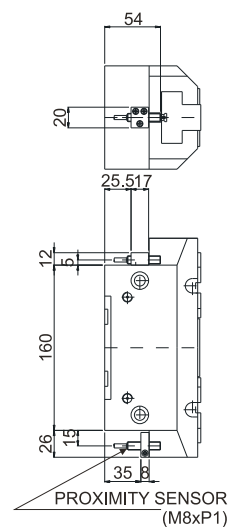


Dimensions(mm)(外形尺寸图(毫米))

THN80



THN80-RS2

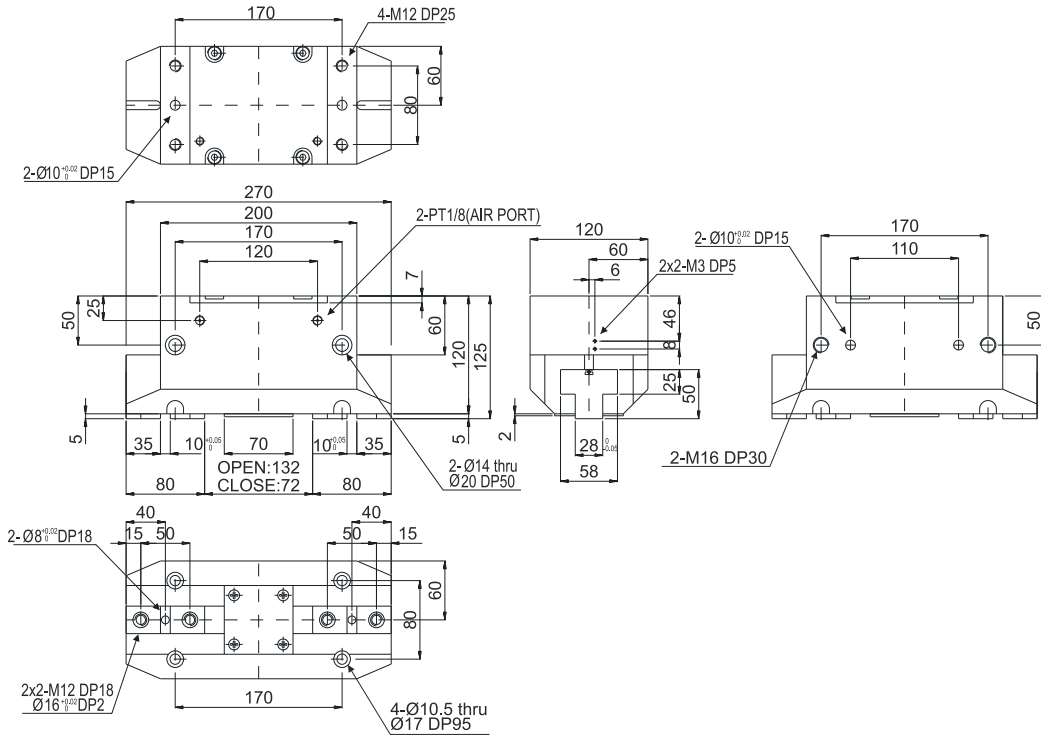


强力型平行气动开闭手指 General Hand

THN Series

Dimensions(mm)(外形尺寸图(毫米))

THN100



THN100-RS2

