

# 中小型180°开闭气动手指 General Hand

## TMHY2 Series



### How To Order (型号表示方法)

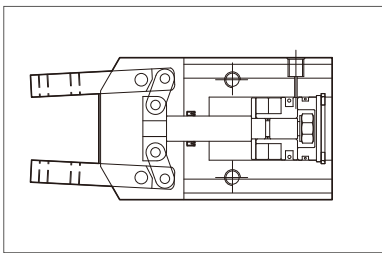
TMHY2- 16 - RS2 - M

<b>Bore</b> 缸径	<b>Auto Switch</b> 磁性开关	<b>Mounting Bracket</b> 安装支架
12, 16, 20, 25, 32	Nil(空) None (无磁性开关) RS1 Switch 1EA(磁性开关1只) RS2 Switch 2EA(磁性开关2只)	Nil(空) None (无支架) M M Type Bracket (M型支架) B B Type Bracket (B型支架)

### Specification (规格)

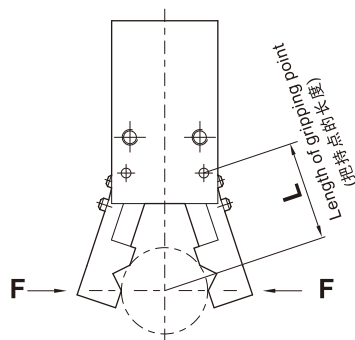
Bore(缸径)		Ø12	Ø16	Ø20	Ø25	Ø32
Fluid(流体)		Air(空气)				
Action(动作形式)		Double Acting(双动)				
Pressure Range(使用压力范围)		0.15~0.7Mpa				
Amb.Temp(环境及流体温度)		0~+60°C(未冻结)				
Max. Operation Frequency(最高动作频率)		60次/分钟				
Lubrication(润滑)	Cylinder(气缸)	Not Required(不需要)				
	Lever Section(爪片)	Required (Apply Lubricating Oil )(抹润滑油)				
Length Of Max. Gripping Point(最大爪臂长度)(L)		40	80	100	120	140
Lever Open/ Close Angles(夹爪开关角度)		-1°~180°				
Theoretical Holding Force (理论夹持力矩)(M)(Kgf-cm)	Closed Side(闭侧)	0.2XP	0.8XP	1.7XP	3.4XP	6.1XP
	Opened Side(开侧)	0.5XP	1.1XP	2.3XP	4.3XP	8.1XP
Effective Gripping Force (有效夹持力)(F)(Kgf)		F=M/LX0.9				
Pipe Size(接管口径)		M5×0.8				
Magnet(磁环)		Built-in Magnet(Standard)(标准内置磁环)				

### Internal Structure (内部结构)

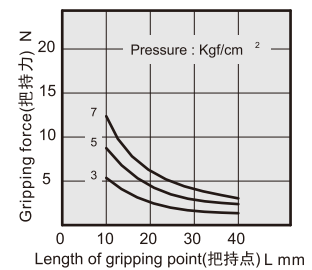


### Gripping Force Characteristic(夹持力特性图)

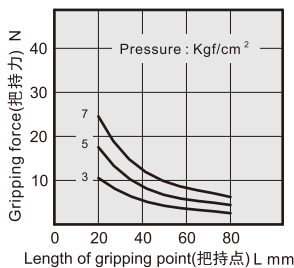
#### TMHC External gripping force(闭合夹持力)



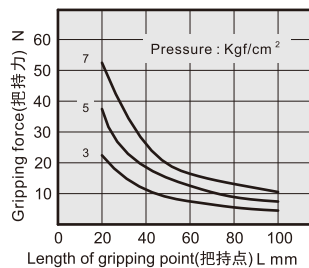
TMHC2-12



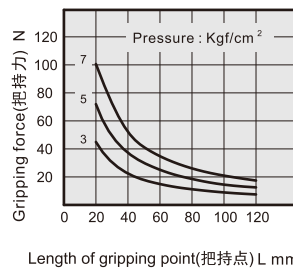
TMHC2-16



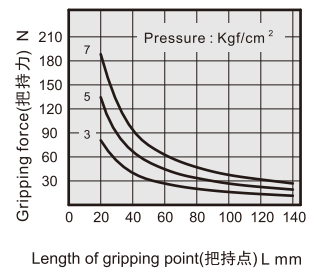
TMHC2-20



TMHC2-25



TMHC2-32



# 中小型180°开闭气动手指 General Hand

## TMHY2 Series

### Effective Gripping Force(有效夹持力)

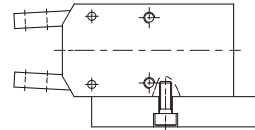
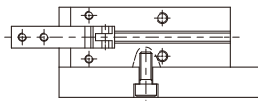
Bore size (缸径)(mm)	The smallest operating pressure (最小操作压力)(Mpa)	Thread Port (手指螺纹孔)(mm)	Effective Gripping Force (有效夹持力)Kg(N)	
			Open(开)	Close(闭)
Ø12	0.22	4 - M3x0.5P	Open(开)	0.75 (7.3)
			Close(闭)	0.3 (2.9)
Ø16	0.1	4 - M3x0.5P	Open(开)	1.6 (16.1)
			Close(闭)	1.2 (11.7)
Ø20	0.1	4 - M4x0.7P	Open(开)	3.4 (33.8)
			Close(闭)	2.5 (24.9)
Ø25	0.1	4 - M5x0.8P	Open(开)	6.4 (63.2)
			Close(闭)	5.1 (49.9)
Ø32	0.1	4 - M6x1.0P	Open(开)	12.1 (119)
			Close(闭)	9.1 (89.6)

Note : The gripping force is the force of open and close gripper which is in the length of gripping point is 30mm and acting pressure is 0.5Mpa.

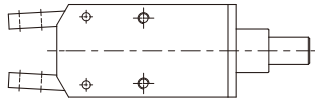
注：夹持力是爪臂接点长度为30mm，动作压力为0.5Mpa时，开关爪片时产生的力。

### Mounting Type ( 安装方式 )

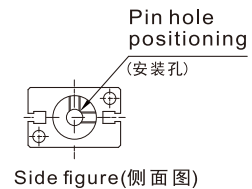
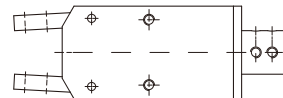
1. Use the thread in the bottom(使用底部的螺纹孔)
2. Use the thread in the side of body(使用本体侧面的螺纹孔)



3. Use M type Mounting bracket in the bottom.  
(在底部使用M型底座固定)



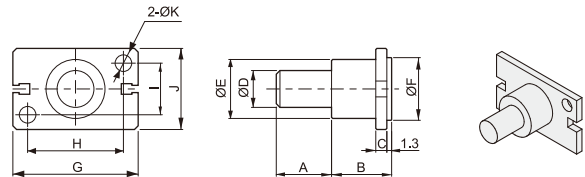
4. Use B type Mounting bracket in the bottom.  
(在底部使用B型底座固定)



### Mounting Bracket ( 安装支架 )

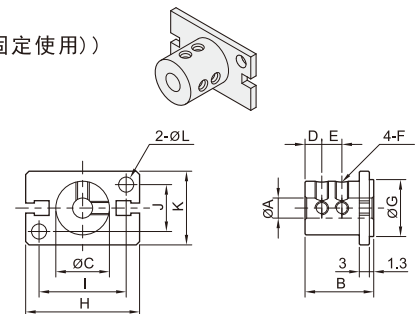
- M type Mounting bracke ( Suitable for internal mounting ) (M型安装支架(适用于内圆固定使用))

Model (型号)	A	B	C	D	E	F	G	H	I	J	K
M12	10	10	2	8	12	13	27	20	10	16	3.5
M16	15	15	3	10	16	17	34	26	14	22	4.5
M20	15	15	3	10	18	21	45	35	16	26	5.5
M25	25	17	5	14	26	26	52	40	20	32	6.6
M32	25	20	6	16	30	34	60	46	26	40	6.6



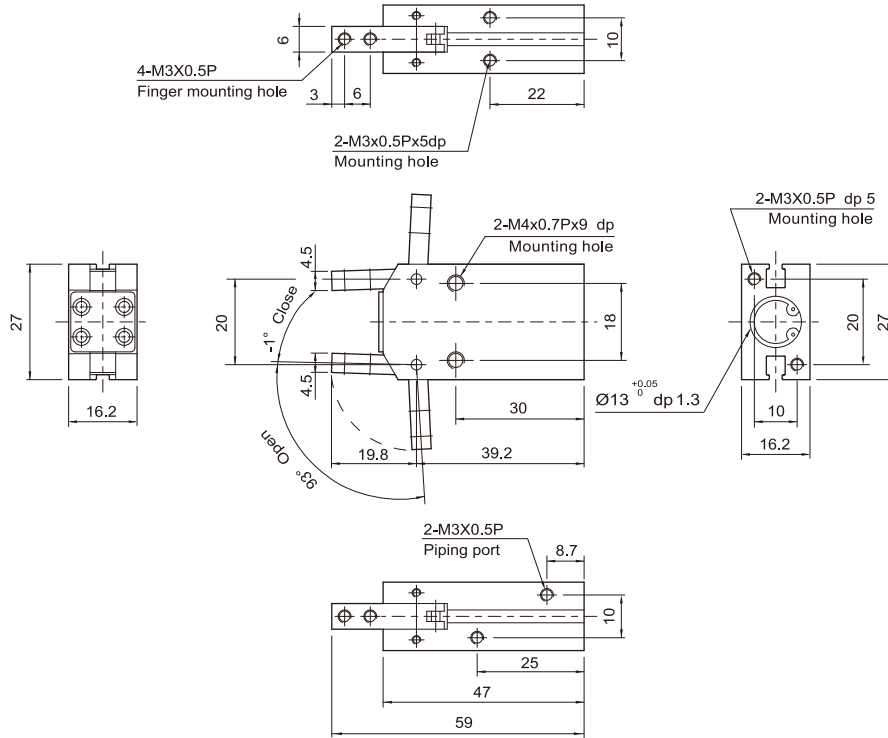
- B type Mounting bracke ( Suitable for external mounting ) (B型安装支架(适用于外圆固定使用))

Model (型号)	A	B	C	D	E	F	G	H	I	J	K	L
B 12	4	15	12	5	-	M3 x 0.5p	11	27	20	10	16	3.5
B16	6	20.5	16	5	6	M4 x 0.7p	17	34	26	14	22	4.5
B20	8	20.5	20	7	7	M4 x 0.7p	21	45	35	16	26	5.5
B25	10	30.5	25	8	10	M4 x 0.7p	26	52	40	20	32	6.5
B 32	12	40.5	32	10	15	M4 x 0.7p	34	60	46	26	40	6.5



### Dimensions(mm)(外形尺寸图(毫米))

#### TMHC2-12



### Dimensions(mm)(外形尺寸图(毫米))

#### TMHC2-16

