

双层吸盘/固定金属底座 Bellows Type VacuumPad With Locking Fittings SPJTK/ SPJYK Series

How To Order(型号表示方法)



SPJ T K - 2 - N

① ② ③

- ① Vacuum Entry Direction (真空口方向) ② Pad Diameter(mm) (吸盘直径) ③ Pad Material (吸盘材料)

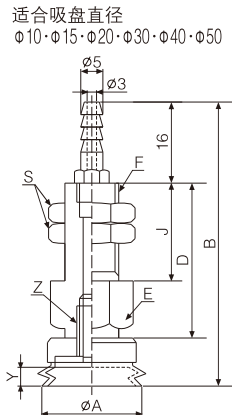
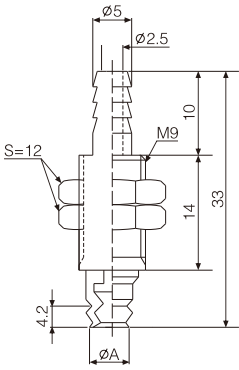
T	Vertical (垂直方向)
Y	Lateral (水平方向)

6	15	30	50
8	20	35	
10	25	40	

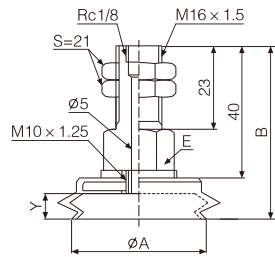
N	Nitrile Rubber (丁腈橡胶)	NE	Nitrile Rubber ESD (导电性丁腈橡胶)
S	Silicone (硅胶)	SE	Silicone ESD (导电性硅胶)

Dimensions(mm)(外形尺寸图(毫米))

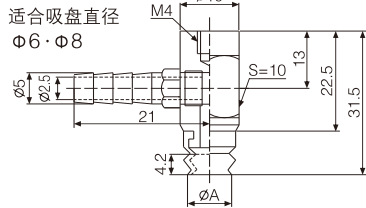
Vertical Direction Connection (垂直方向连接) · SPJTK (型号)
适合吸盘直径 $\phi 6 \cdot \phi 8$



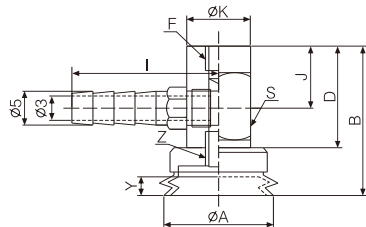
适合吸盘直径 $\phi 60 \cdot \phi 70 \cdot \phi 80$



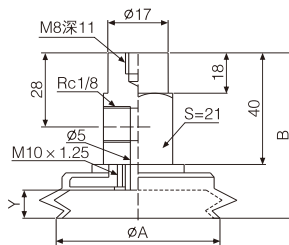
Lateral Direction Connection (水平方向连接) · SPJYK



适合吸盘直径 $\phi 10 \cdot \phi 15 \cdot \phi 20 \cdot \phi 30 \cdot \phi 40 \cdot \phi 50$



适合吸盘直径 $\phi 60 \cdot \phi 70 \cdot \phi 80$



S:Width Across Flats
S:六角对边尺寸

Model (型号)	A	B	D	E	F	J	S	Y	Z
SPJTK-6	6	-	-	-	-	-	-	4.2	-
SPJTK-8	8	-	-	-	-	-	-	4.2	-
SPJTK-10	10	47.5	22	10H	M8	15	10H	3	M5
SPJTK-15	15	49	22	10H	M8	15	10H	4.5	M5
SPJTK-20	20	51	22	10H	M8	15	10H	5.5	M5
SPJTK-30	30	66	32	14H	M10	20	14H	8	M6
SPJTK-40	40	66	32	14H	M10	20	14H	8	M6
SPJTK-50	50	68	32	14H	M10	20	14H	9	M8
SPJTK-60	60	62.5	-	21H	-	-	-	10	-
SPJTK-70	70	63.5	-	22H	-	-	-	11	-
SPJTK-80	80	63.5	-	23H	-	-	-	11	-

Model (型号)	A	B	D	S	F	J	K	Y	Z
SPJYK-6	6	-	-	-	-	-	-	-	-
SPJYK-8	8	-	-	-	-	-	-	-	-
SPJYK-10	10	31.5	22	10H	M4depth6	14	10	3	M5
SPJYK-15	15	33	22	10H	M4depth6	14	10	4.5	M5
SPJYK-20	20	35	22	10H	M4depth6	14	10	5.5	M5
SPJYK-30	30	50	32	14H	M6depth8	20	12	8	M6
SPJYK-40	40	50	32	14H	M6depth8	20	12	8	M6
SPJYK-50	50	52	32	14H	M6depth8	20	12	9	M8
SPJYK-60	60	62.5	-	-	-	-	-	10	-
SPJYK-70	70	63.5	-	-	-	-	-	11	-
SPJYK-80	80	63.5	-	-	-	-	-	11	-